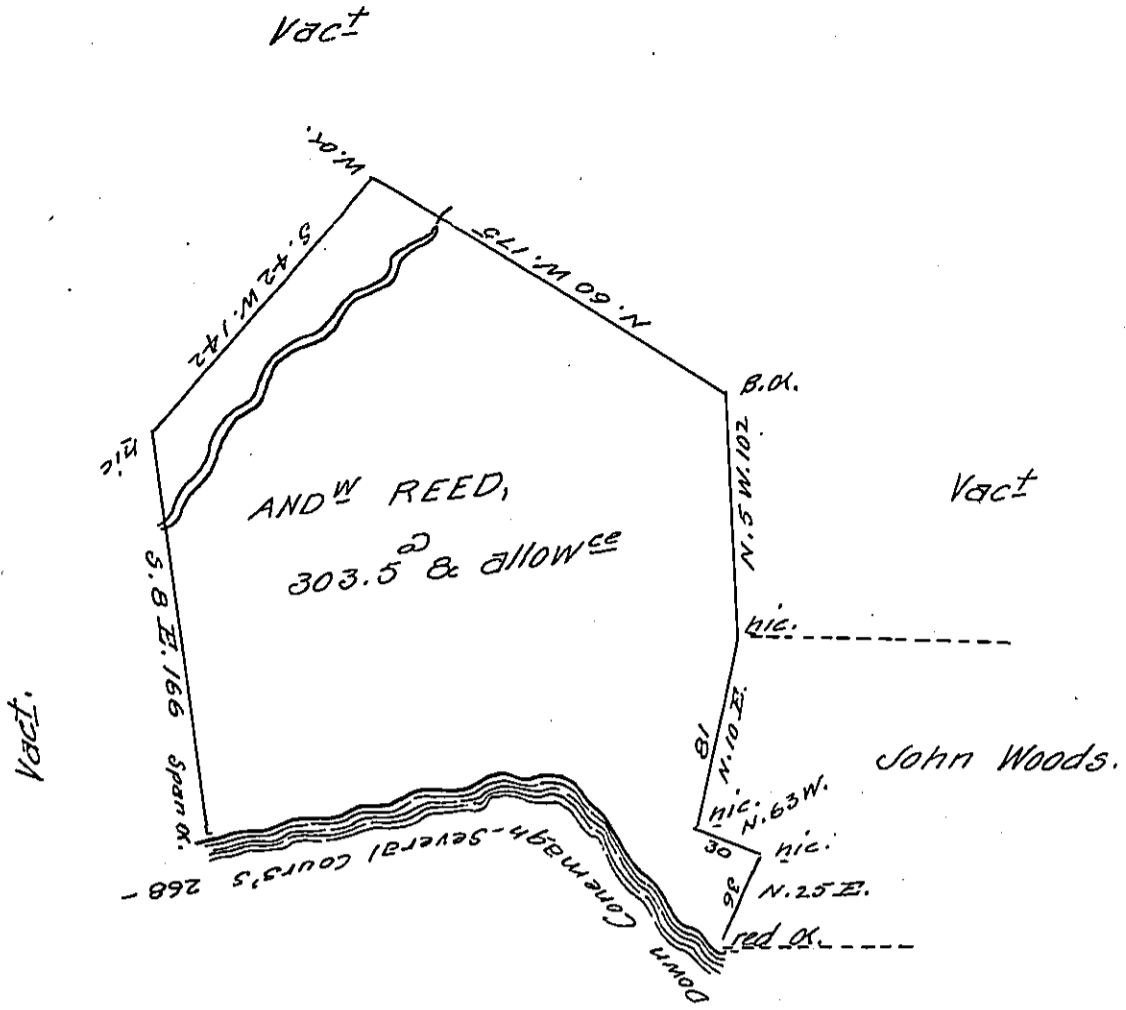


Cours's & Dist  
on the River

N. 75 E.	136
S. 75 E.	30
S. 40 E.	22
S. 30 E.	28
S. 49 E.	20
S. 45 E.	28
S. 75 E.	4
	<u>268</u>



Survey'd to Andrew Reed on the 25<sup>th</sup> Nov<sup>r</sup> 1784, The above described tract of three hundred & three acres & an half acre & allowance of six P. Cent. situate on Conemagh River including an Improvement, bounded by lands of Tho<sup>s</sup> Galbraith formerly John Wood's & others, in Westmorland County. By War<sup>t</sup> of the 23<sup>d</sup> August 1784

Joshua Elder, D. S.

John Lukens, Esq<sup>r</sup>. S. Gen<sup>l</sup>.

IN TESTIMONY that the above is a copy of the original remaining on file in the Department of Internal Affairs of Pennsylvania, made conformably to an Act of Assembly approved the 16th day of February, 1833, I have hereunto set my Hand and caused the Seal of said Department to be affixed at Harrisburg, this thirteenth day of July 1906

*Isaac Brown*  
Secretary of Internal Affairs.